

## FACT SHEET

### Wharf Specifications

Auckland Point Berth 1

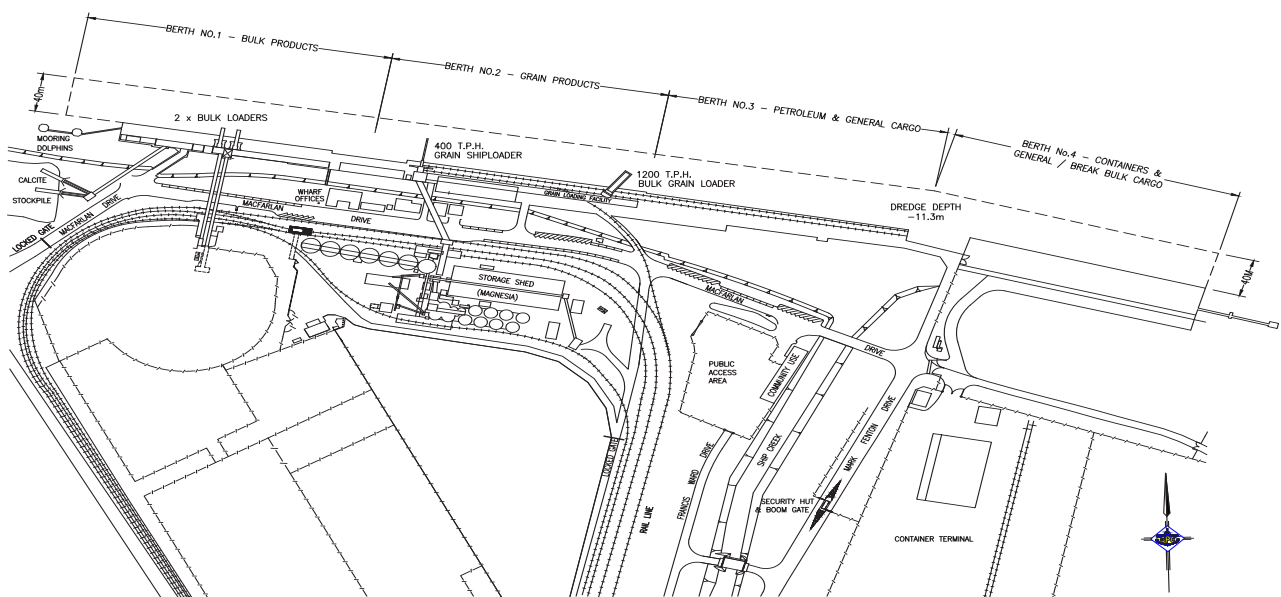
# Port Central

## Port of Gladstone

## PRECINCT INFORMATION

The Port of Gladstone is a natural deep-water harbour located 525 kilometres north of Brisbane and is just south of the Tropic of Capricorn at Latitude of 23°49.61'S, Longitude 151°34.6'E.

Owned by	Gladstone Ports Corporation
Operated by	Gladstone Ports Corporation
Type of facility	Multi-user berth for cruise, RORO and clean products
Access	By road
Working hours	24/7
Location	Berth 1 is located at the Port Central Precinct before the entrance to Auckland Inlet and adjacent to Auckland Hill, 32km from the Fairway Buoy.



## WHARF DIMENSIONS

Wharf length	173m
Wharf width	16m
Wharf approach	2 lane concrete approach
Design vessel size	50,000 DWT (larger vessels may be accepted subject to approval)
Maximum vessel length	238m LOA (larger vessels may be accepted subject to approval)
Maximum berthing displacement	61,000 Tonnes (larger vessels may be accepted subject to approval)

## BERTH DIMENSIONS

Berth pocket width	40m
Berth length	259m
Berth depth	11.3m (Design), 11.1m declared*
Under keel clearance	0.5m
Berth approach	11.5m (Design), 11.5m declared*
Berthing manoeuvres	Vessel berth either port or starboard side to, depending on tide and vessel configuration
Berthing velocity	0.15m/s max (vessels up to 61,000t berthing displacement)
Bollard capacity	50t
Distance between fenders	Varies
Fenders	Trelleborg SCN1300 super cone fender, frontal frame with UHMWPE wearing pads

\*Refer to MSQ Notice to Mariners 111 (T) of 2023.

## SWING BASIN

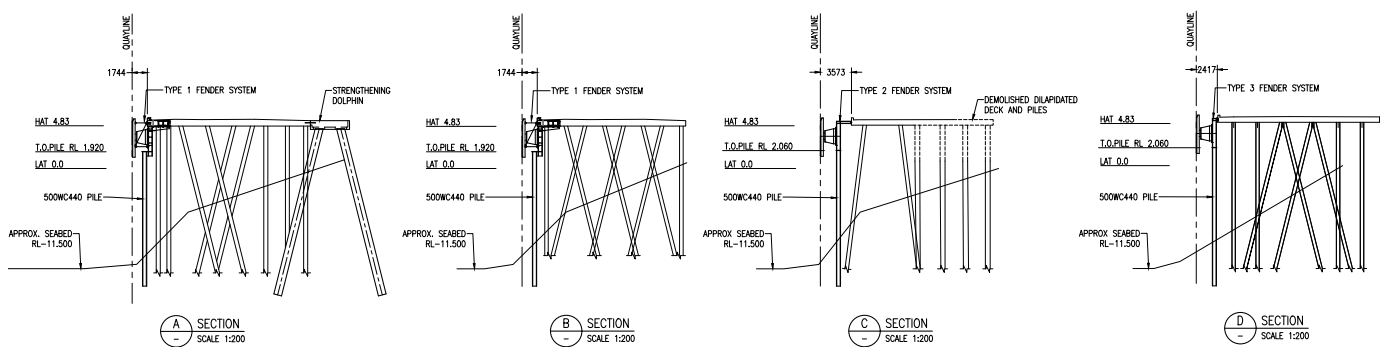
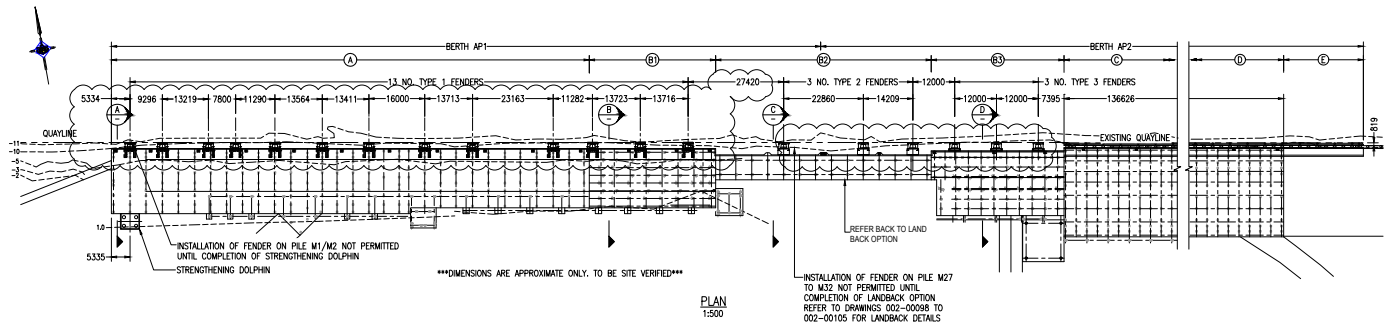
Depth	11.5m
Diameter	523m
Location	Between wharf and channel

## BERTH SERVICES

Shore power	No
Water	Potable
Fuel	Bunker vessel available at wharf or sea, road tanker only available with prior notice.

## TECHNICAL SPECIFICATIONS

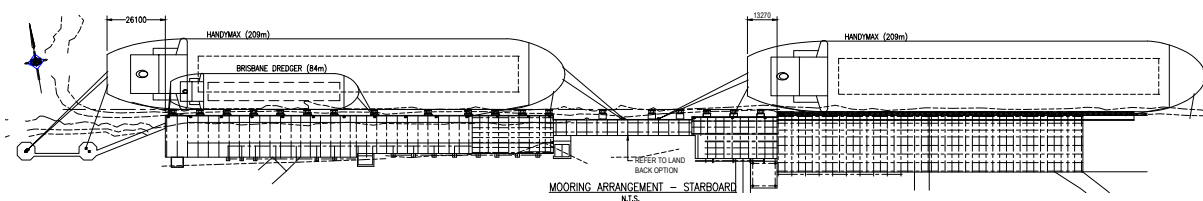
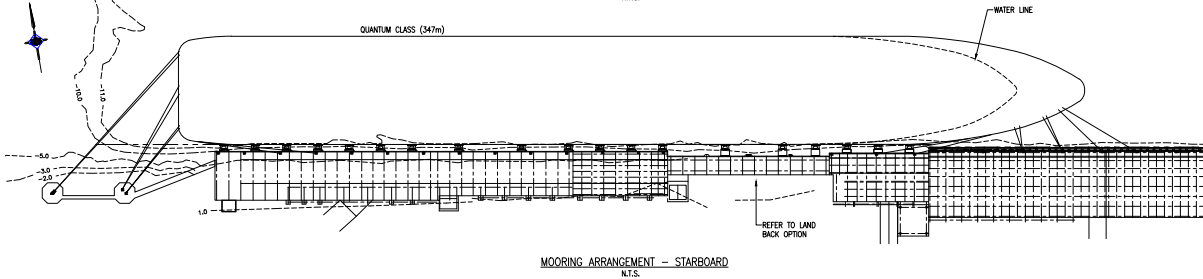
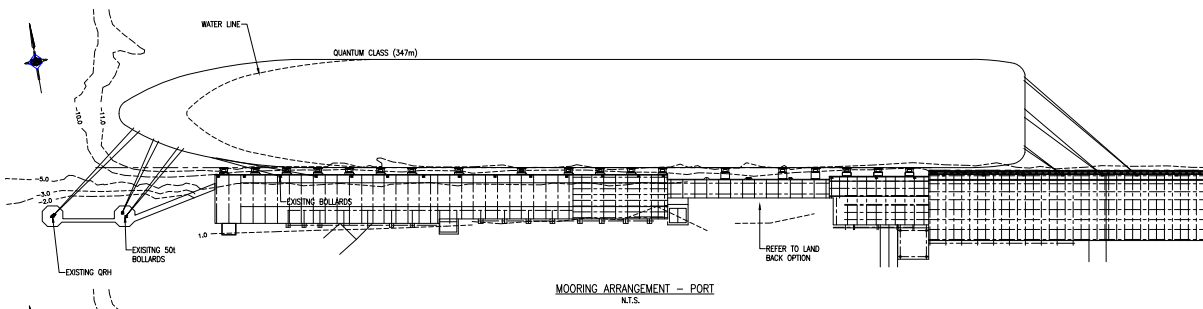
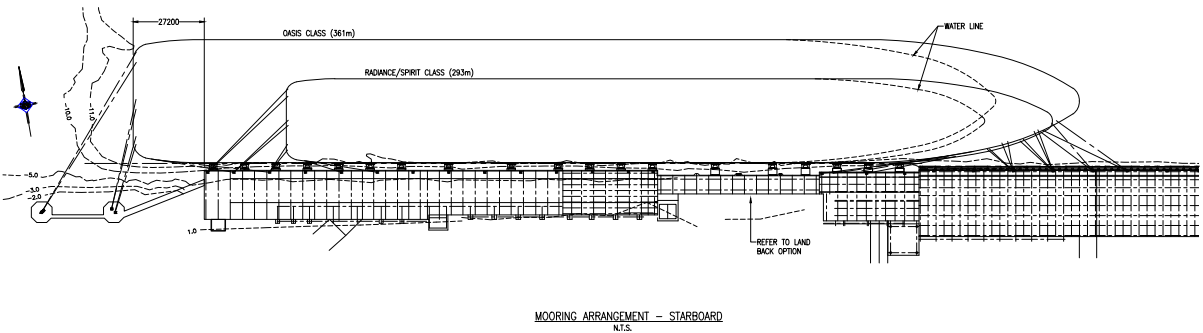
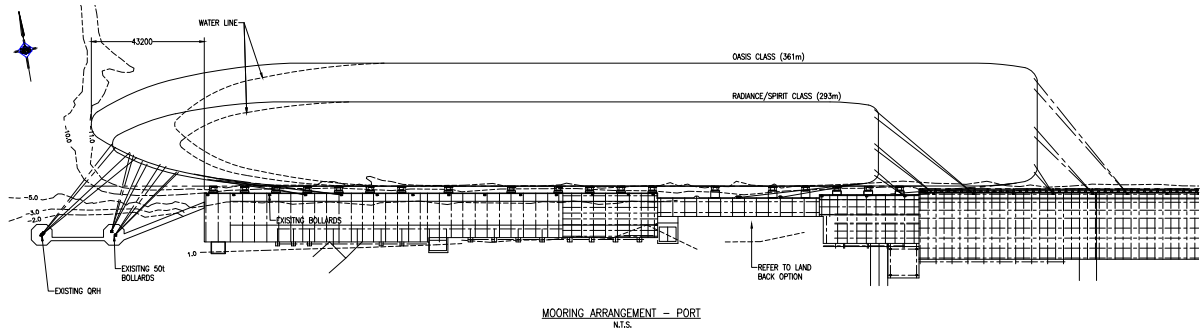
### FENDER PLACEMENT



NOTES:  
1. FOR NOTES REFER DRG 002-00078 TO 002-00080.

# TECHNICAL SPECIFICATIONS

## MOORING ARRANGEMENTS



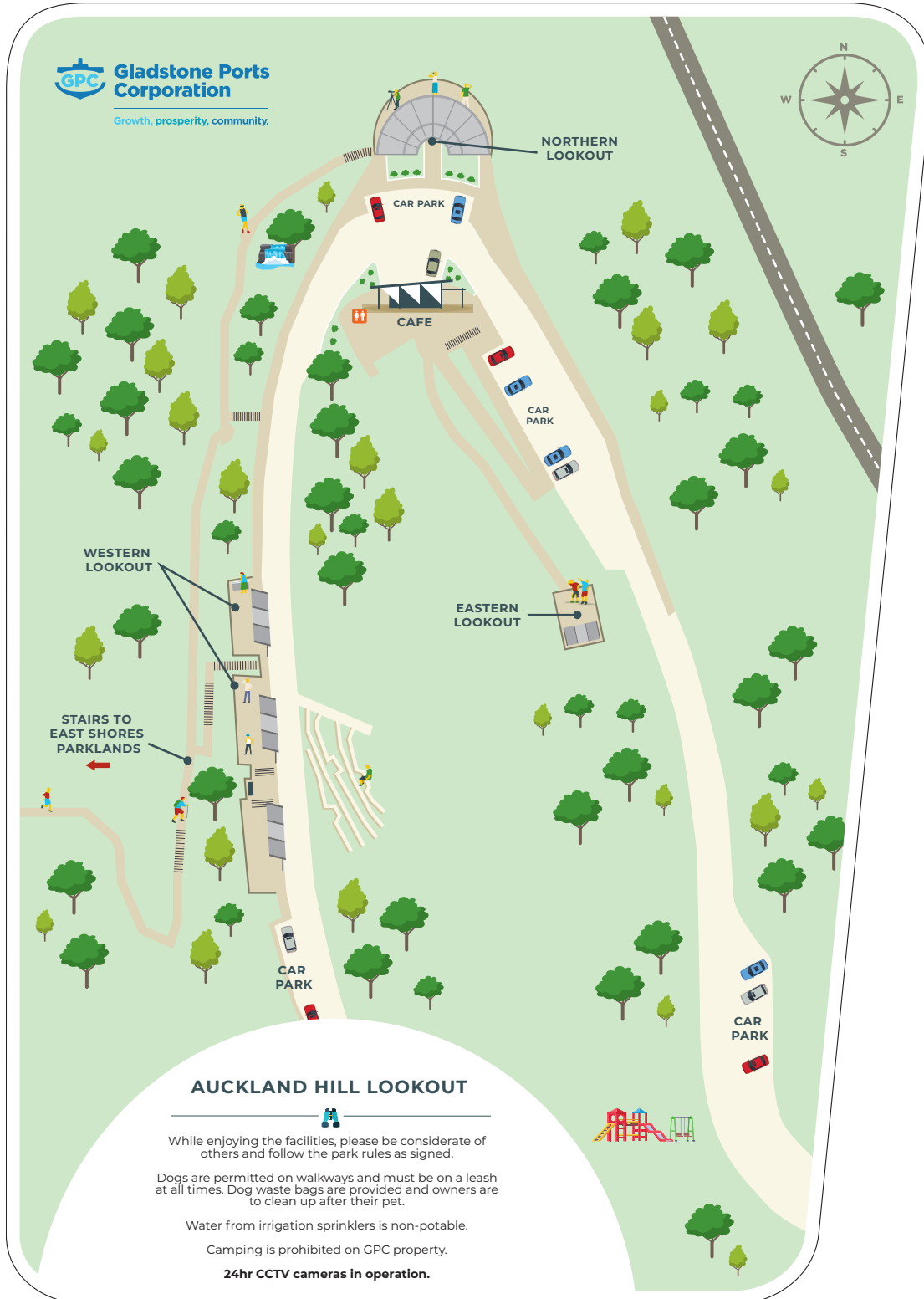
# EAST SHORES PARKLANDS

## DISTANCES FROM CRUISE VESSEL BERTH:

Terminal	60m
Bus/Taxi	215m
Markets	250m
Cafe	270m
Lookout	Through markets via stairs



AUCKLAND HILL LOOKOUT



FOR FURTHER INFORMATION

For more information, you can contact [sales@gpcl.com.au](mailto:sales@gpcl.com.au)

